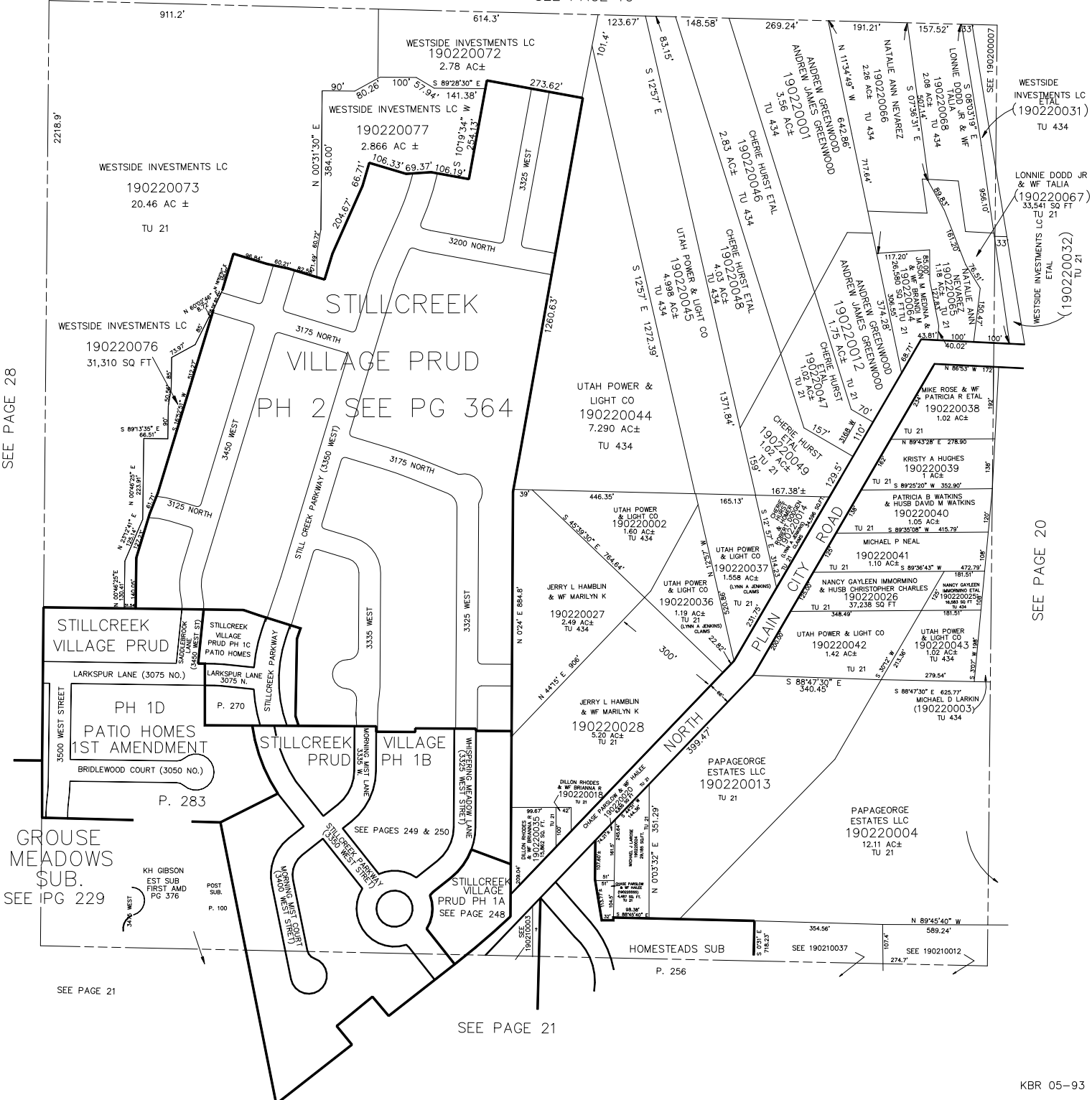


N.W. 1/4
SECTION 27, T.7N., R.2W., S.L.B. & M.

IN PLAIN CITY AND WEBER COUNTY
SCALE 1" = 200'

TAXING UNIT: 19, 21, 434

SEE PAGE 10



SEE PAGE 28

SEE PAGE 20

GROUSE MEADOWS SUB.
SEE PG 229

SEE PAGE 21

SEE PAGE 21